

Promoting international rail freight transport across the Rhine-Alpine European Corridor.

Andrea Galluzzi - RFI

27 Novembre 2023



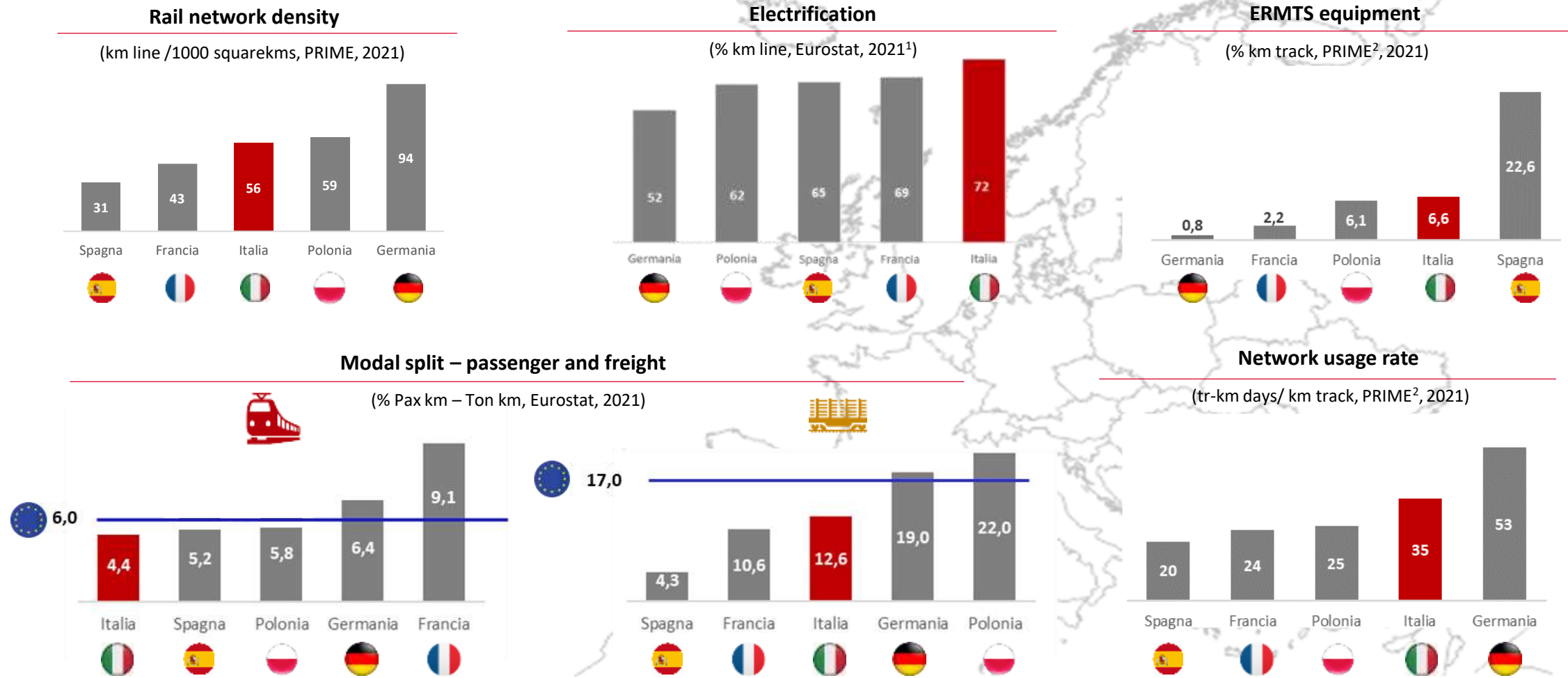
Assets of the National Rail Infrastructure Manager

Main KPIs 2022



RFI in Europe: a comparison of the characteristics of European networks

Benchmark with Leading Infrastructure Managers

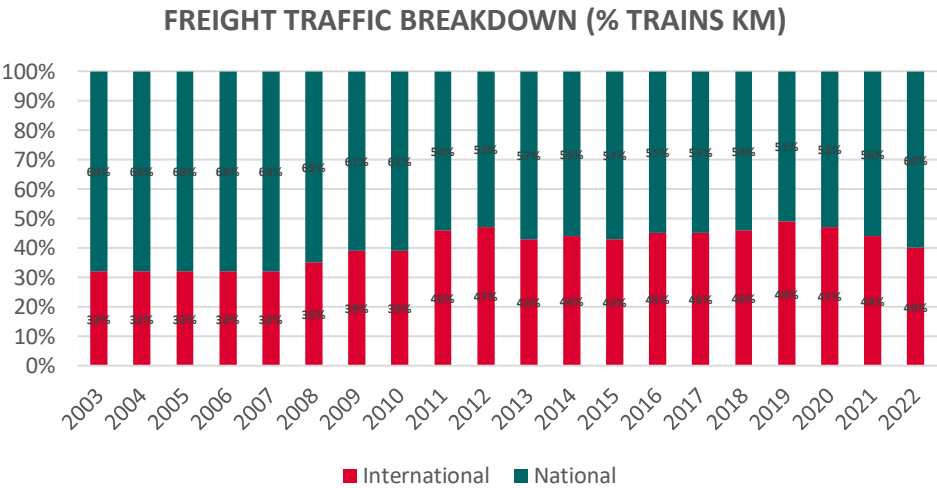


Italy, compared to other European countries, has the most electrified railway network.

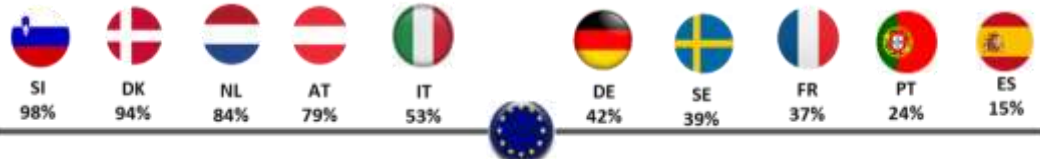
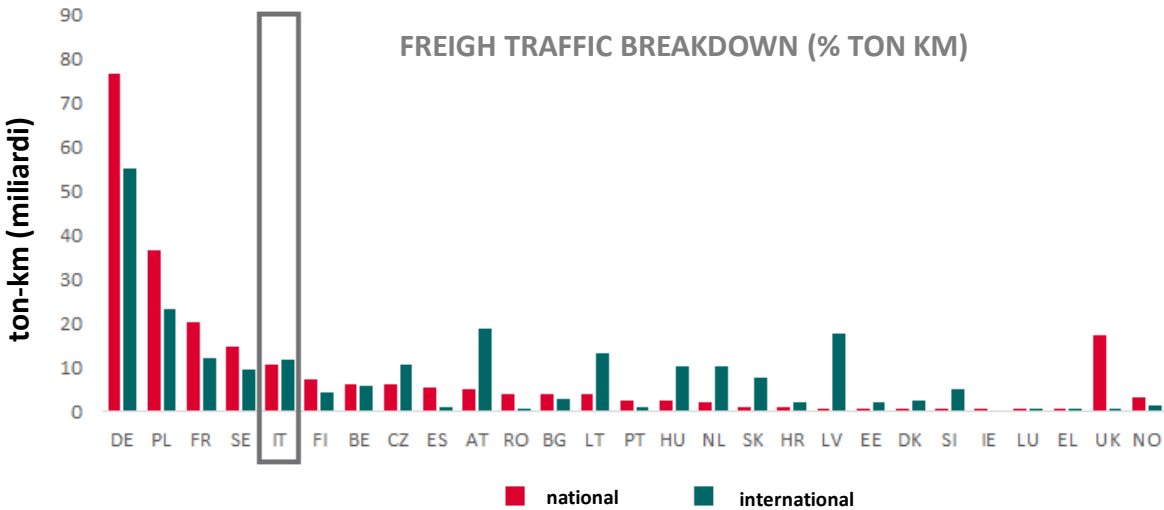
(1) For Germany, the last available year is 2020.
(2) PRIME: Platform of Rail Infrastructure Managers of Europe

The relevance of the RFI international business for the European modal shift objectives

International rail freight traffic: evolution and European positioning



Source: RFI, Piano commerciale, June 2023



Source: RMMS, January 2021

The European policy for sustainable and inclusive mobility

The creation of a single European railway area

Vision



Facilitate rail transport, as a green, resilient and digitized transport system to allow the free movement of people and goods between the Member States of the European Union to support the development of the single European market

Strategy



- Roadmap towards a single European transport area - **White Paper** - 2011
- **European Green Deal** - 2019
- **Strategy for sustainable and smart mobility** - 2020

Tools



- Regulation (EU) 913/2010 on the European railway network for competitive freight transport
- Regulation (EU) n. 1315/2013 on Union guidelines for the development of the trans-European transport network
- **Rail packages**



The tools for the development of a green and interoperable European network

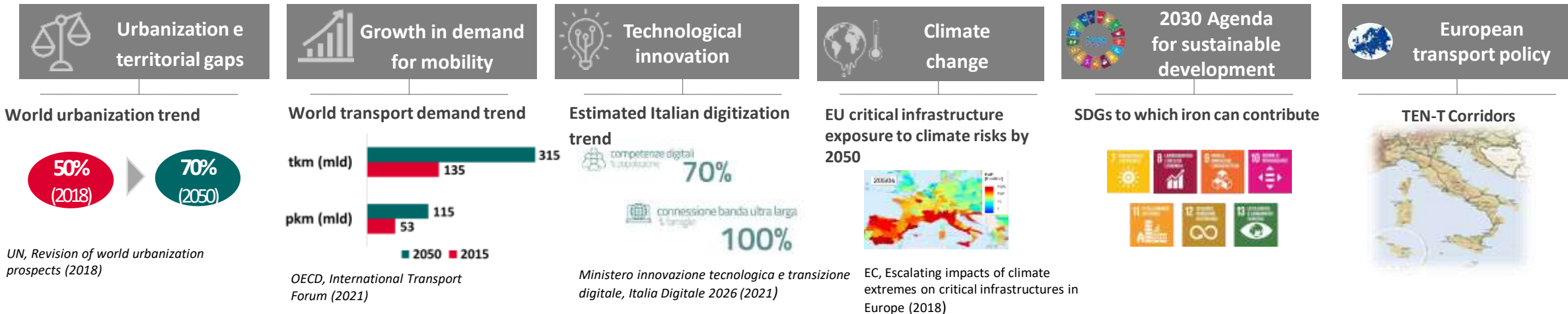


The multimodal corridors of the TEN-T network and the rail freight corridors

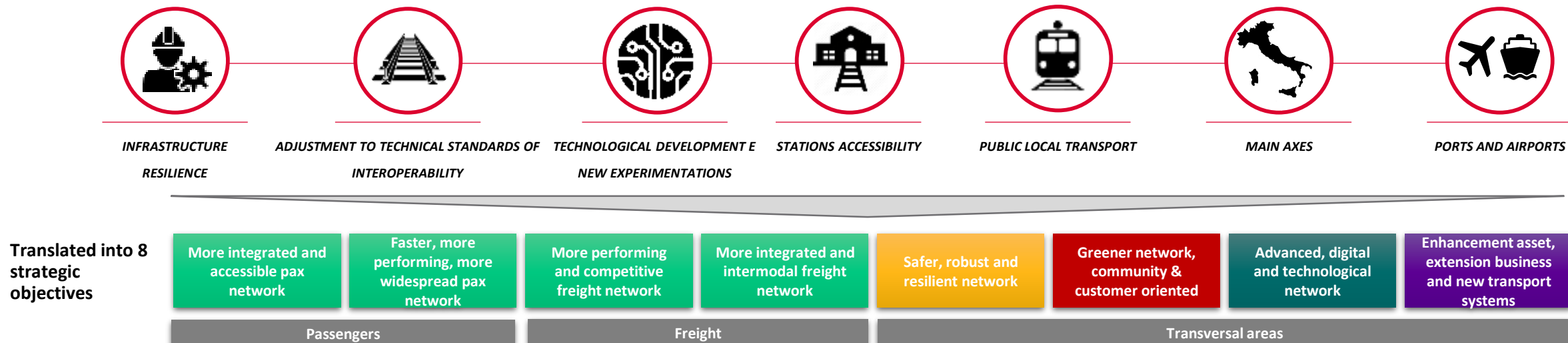
	Hard measures TEN-T Corridors	Soft measures RAIL FREIGHT CORRIDORS
Objectives	Ensure a coordinated European infrastructure investment plan	Strengthen international freight transport through structured cooperation between Infrastructure Managers
Legal basis	Regulation UE 1315/2013	Regulation UE 913/2010
Governance	European coordinators and Corridor Forum	Executive Board - EB (Ministries) e Management Board – MB (Infrastructure managers)
Scope	Passenger and Freight Traffic TEN-T Core network	Freight Traffic Lines more suitable for freight traffic
Mode of transport	Multimodal	Railway

Strategic investment programs in the field of railway mobility

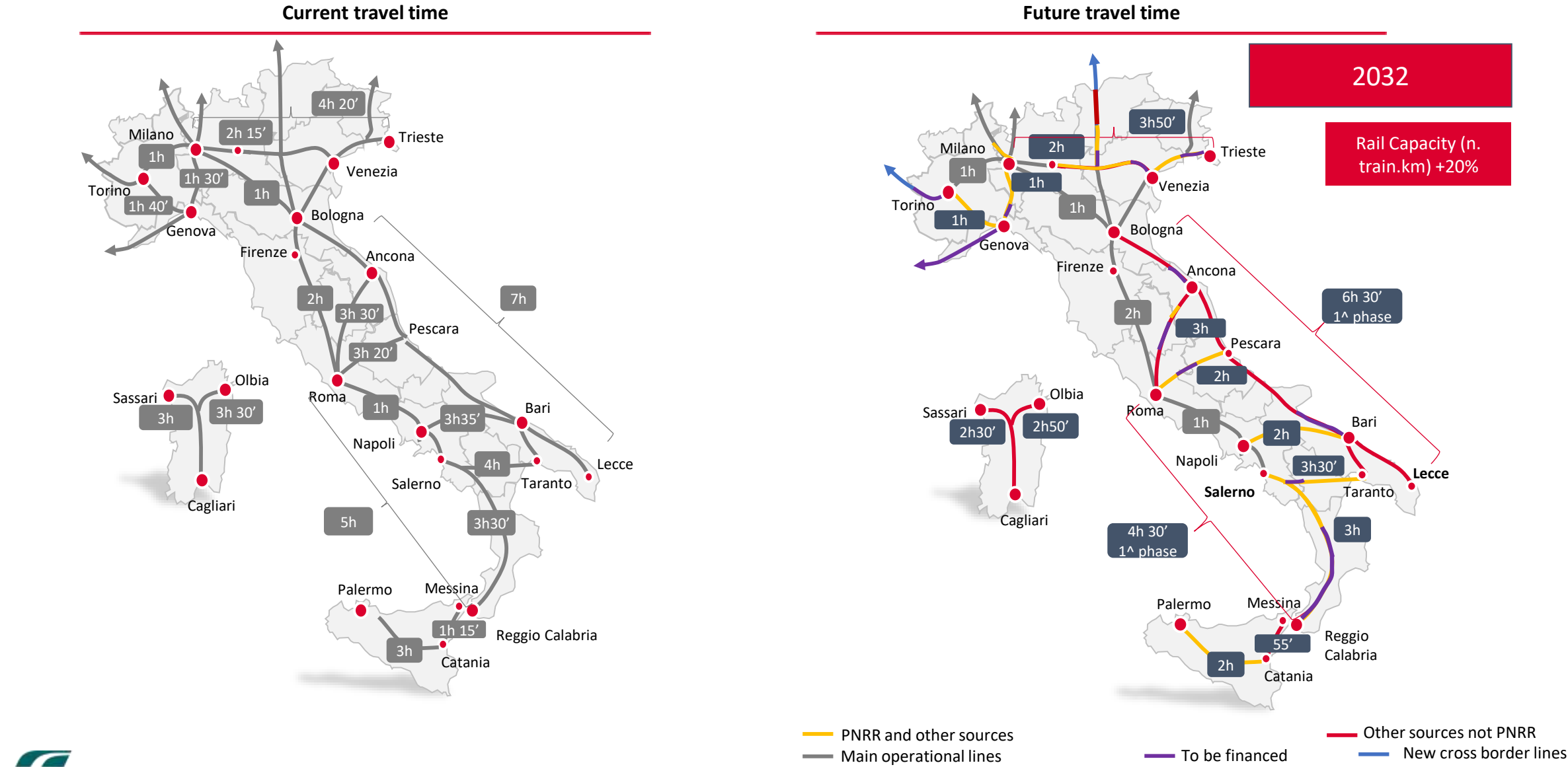
In a complex mobility ecosystem where the path to achieving the Sustainable Development Goals (SDGs) is slow and uphill ...



... The main INVESTMENT STRATEGIES that will contribute to the country's green and digital transition



Main projects planned on national railway infrastructure



Rail infrastructure upgrades on the TEN-T Rhine Alpine Corridor



An ambitious investments portfolio planned by RFI in order to increase capacity and line performance.
An infrastructure and technological upgrading program driven by the market demand.

Upgrading to P410 loadign gauge



ERTMS Deployment by 2030



Upgrading to 750 track lenght by 2030



Genoa Node and Terzo valico dei Giovi
Construction of the new high speed line “**Terzo valico dei Giovi**”; enhancement of **Genoa Node**

Upgrading **Chiasso-Milano** line and **Milano node**

Upgrading to 4 tracks **Milano Rogoredo - Pavia**

Upgrading to 4 tracks **Voghera – Tortona**

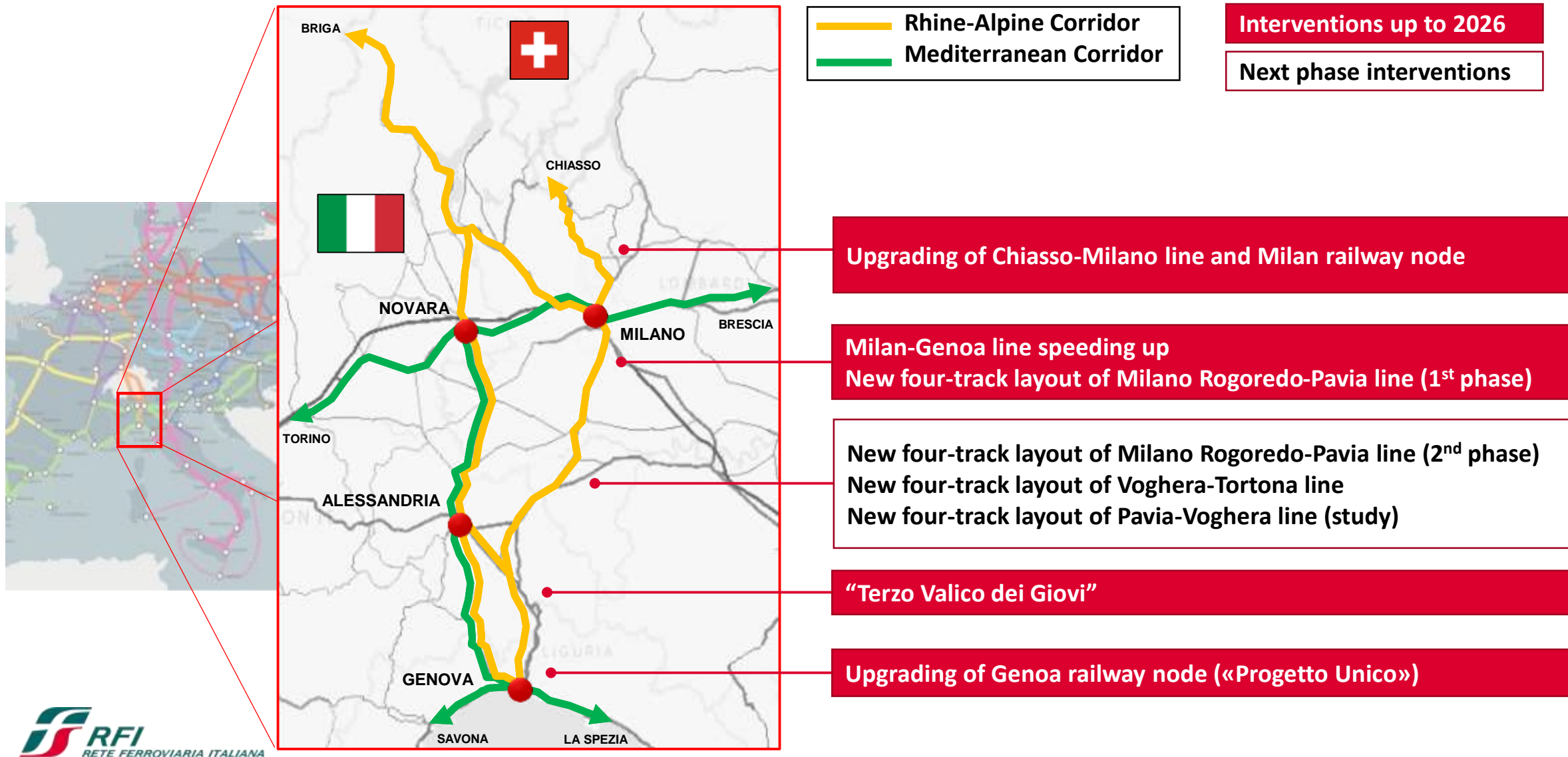
Speed increase **Genova – Milano** historical line



— Milano – Genova via Arquata
— Milano – Genova via Terzo Valico

The TEN-T Corridors: Rhine-Alps and Mediterranean

Territorial framework of interventions on the Italian side



«PROGETTO UNICO» - “TERZO VALICO DEI GIOVI” and “NODO DI GENOVA”

Expected benefits

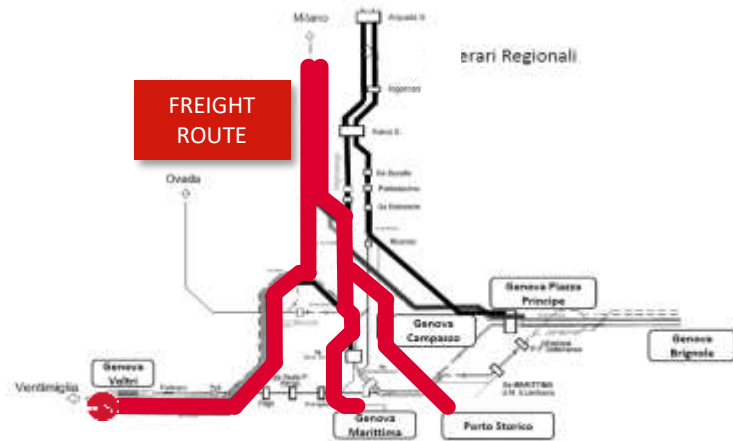
Works are in progress to upgrade the railway connections between Genoa railway node and “Terzo Valico dei Giovi”

FREIGHT SERVICES

- Upgrading of Genova Voltri freight station
- Construction of the railway line Bivio Fegino – Campasso – Historical Port

PASSENGER SERVICES

- New four-track layout between Genova Voltri and Genova Sampierdarena stations
- New six-track layout between Genova Brignole and Genova Principe stations
- New Genova Voltri station



+ 49% trains
per day

Benefits



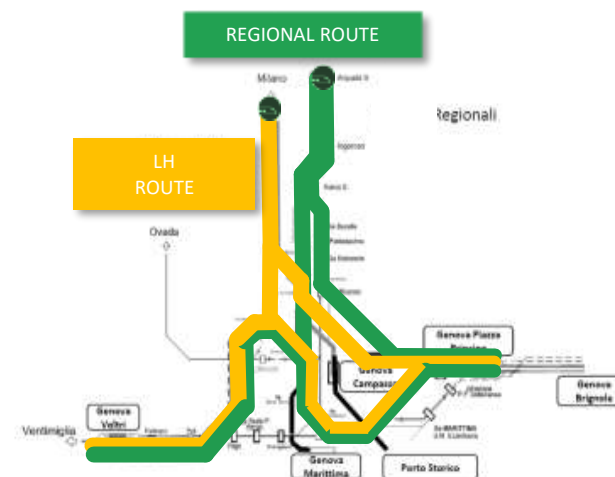
Line speed



Regularity



Freight traffic
Performance



+ 43% trains
per day