

BUSINESS DELEGATION

@TRANSPORT LOGISTIC MUNICH
2-5 JUNE 2025

Green Deal
Evolution
Intermodal
Savona
Real
Eu Corridor
Italy
Liguria
Evolution
Eu Corridor
Digitization
Genoa
Sustainable
Vado
Green Deal
Evolution
Intermodal
Savona
Real
Eu Corridor
Italy
Liguria
Evolution
Eu Corridor
Digitization
Genoa
Sustainable
Vado
Green Deal

Green Deal
Evolution
Intermodal
Savona
Real
Eu Corridor
Italy
Liguria
Evolution
Eu Corridor
Digitization
Genoa
Sustainable
Vado
Green Deal
Evolution
Intermodal
Savona
Real
Eu Corridor
Italy
Liguria
Evolution
Eu Corridor
Digitization
Genoa
Sustainable
Vado
Green Deal
Evolution
Intermodal
Savona
Real
Eu Corridor
Italy
Liguria
Evolution
Eu Corridor
Digitization
Genoa
Sustainable
Vado
Green Deal



Paolo Piacenza
Secretary General



Marina Monti
Chief Director
Marketing &
Communication



Paolo Canavese
Chief Director
Port of Savona Territorial
Office



Laura Ghio
Director
Port Planning &
Innovation

Ports of Genoa Autorità di Sistema Portuale del Mar Ligure Occidentale

Via della Mercanzia 2
16124 Genova - Italy

+39 010 2411
marketing@portsofgenoa.com
www.portsofgenoa.com



@PortsofGenoa



@PortsofGenoa



@portsofgenoa_official



@portsofgenoa



FOUR PORTS, ONE PORT AUTHORITY

Genoa, Pra', Savona and Vado Ligure, the Ports of the Western Ligurian Sea - grouped together as the Ports of Genoa - rank as Italy's pre-eminent port range in terms of total throughput, commodity diversity and economic output.

Located across a total surface area of approximately 7 million sqm, 35 specialised terminals cater for all key commodity sectors: container, general cargo, Ro-Ro and bulk. Specifically, the Ports of Genoa rank as the leading Mediterranean gateway port for containers, project and heavy-lift cargo, and fruit.

In 2024, total cargo traffic reached 64.5 million tonnes, while containers totaled 2.8 million TEUs, confirming the Ports of Genoa in first place in Italy and sixth in Europe for gateway traffic. 5 million passengers passed through the cruise and ferry terminals, bringing the Ports of Genoa to second place in Italy and third in Europe in the cruise ports ranking.

THE PORTS OF GENOA



CONNECTED TO THE WORLD

OPTIMAL GEOGRAPHICAL LOCATION:

Strategically located in the northernmost point of the Mediterranean Sea, at the heart of Europe, easily accessible overland across fast road and rail connections and by sea across the ultra-large container vessels which can dock in the natural deepwater, the Ports of Genoa are equipped to consolidate their leadership as the premier Mediterranean gateway to the major consumer centres in Europe.

DIRECT MARITIME CONNECTIONS:

160 regular line services operated by all the major Shipping Companies and Alliances, ensuring direct connections with over 450 world ports and with over 1100 through a single transhipment.



Alberto Pozzobon
Marketing &
Communication



Cristina De Gregori
Marketing &
Communication



Antonella Rossi
Marketing &
Communication



Leonardo Picozzi
Marketing &
Communication



Francesca Traverso
Marketing &
Communication



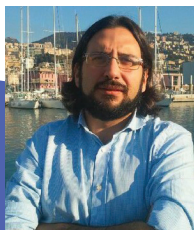
Monica Romano
Marketing &
Communication



Matteo Macciò
Marketing &
Communication



Emanuele Profice
EU Policy Office






Alberto Pera
Economic Analysis &
Statistics

Ports of Genoa Autorità di Sistema Portuale del Mar Ligure Occidentale

Via della Mercanzia 2
16124 Genova - Italy

+39 010 2411
marketing@portsofgenoa.com
www.portsofgenoa.com

 @PortsofGenoa
 @PortsofGenoa
 @portsofgenoa_official
 @portsofgenoa



THE PORTS OF GENOA ACTION PLAN

The Port Authority has launched a major port renewal plan, with ongoing investments of 3 billion euros supported by the Italian Government and the EU.

The top priorities are accessibility improvement by sea and by land, energy transition, innovation and digitization, with the aim to build green and efficient logistic service option from the South to the Central European industry and markets.

THE MAIN SOUTHERN GATEWAY TO THE HEARTLAND OF EUROPE

Today the Ports of Genoa have a network of railway connections to Northern Italy, with over 100 weekly services, while a direct rail link with Switzerland has been operational for some years, progressively growing up to three departures per week.

Since September 2025 a new railway connection to Germany will be operational, between the Port of Genoa-Pra' and Stuttgart (Kornwestheim), offering our logistics services to the industries of Baden Württemberg.

Looking ahead, in 2027 the new hi-speed/ hi-capacity rail line between Genoa and Milan will be available, improving railway service towards Southern Europe, with trains up to 750 meters long and 2,000 tons of load capacity.

Liguria International is the regional agency committed to promoting the internationalization of Liguria's economy. Established through a strategic partnership between the Liguria Region and the Ligurian Chambers of Commerce, the agency serves as a vital link connecting local enterprises to global markets, with a particular focus on sectors such as logistics, mobility, IT, and supply chain management.

In alignment with the themes of Transport Logistic 2025—including sustainability, digital transformation, and resilient supply chains—Liguria International supports companies in adopting innovative practices. This includes facilitating access to digital platforms, promoting eco-friendly logistics solutions, and encouraging the adoption of smart technologies.

The agency's mission is to enhance the global competitiveness of Ligurian businesses by providing comprehensive support services, including market intelligence, export promotion, and participation in international trade fairs. By fostering collaborations and partnerships, Liguria International aims to position Liguria as a hub of quality and innovation in the logistics and supply chain industry.



Carlo Golda
President

Liguria International Gruppo Filse

Via XX Settembre, 42
16121 Genova (Italia)

+39 010 8403266

info@liguriainternational.it

<http://www.liguriainternational.it/it/>



Liguria International



Liguria International



@liguriainternational





Gianluca Croce
President



Since 1992, the Young Members Group has promoted entrepreneurship and networking among under-40 professionals, organizing the international Shipbrokers and Shipagents Dinner, now the highlight of the Genoa Shipping Week.

Associazione Agenti e Mediatori Marittimi Genova

Piazza Dante 6
16121 Genova - Italy

+39 010 591595 / 0105536696

info@assagenti.it

www.assagenti.it

 Assagenti

 Assagenti



ASSAGENTI

ASSOCIAZIONE AGENTI E MEDIATORI MARITTIMI GENOVA

Assagenti (Association of Shipping Agents, Shipbrokers and Airline Agents) represents companies operating in various sectors of the maritime industry: liner, tramp and cruise ship agents; sale & purchase and chartering brokers; manning agents managing crew operations; and yachting service providers.

Founded in 1945, the Association aims to safeguard its members' interests and promote their development. Assagenti is represented in several national and local bodies including Federagenti, the Genoa Port Authority, the Chamber of Commerce, C.I.S.Co, and the Italian Shipping Academy, which it co-founded.

Through dedicated internal committees, the Association fosters dialogue with the maritime cluster to address shared challenges, and it offers its members assistance on legal, fiscal, labor, and organizational matters.

Assagenti is committed to digital innovation, contributing to the development of Genoa's port telematics system, E-Port. It also places great importance on training: in partnership with the Italian Shipping Academy, it established the country's only Maritime Broker School and runs seminars, workshops, and career orientation for students.

ASSOCIAZIONE SPEDIZIONIERI, CORRIERI E TRASPORTATORI DI GENOVA

Spediporto is the largest and most representative Italian Association of international shipping houses and provides qualified support and highly specialized services to its members. 30% of the Italian enterprises and 90% of Ligurian ones adhere to it

Thanks to a typically managerial structure, which combines experience in the field and modernity, Spediporto develops, directly and through its participated Societies, various activities: from the informatization of the harbour operating processes to the services and the goods, from assistance to certified weighing operations to fumigation services and support to the control of the goods themselves, up to training for companies and individuals. Moreover it provides assistance to port gates, management and processing of data exchanged by shippers and much more.



Giampaolo Botta
General Manager



Amanda Del Re
Events Communication
& Marketing Responsible

Associazione spedizionieri, corrieri e trasportatori di Genova

Via Roma 9/4
16121 Genova - Italy

+39 010 5451986

info@spediporto-genova.com

www.spediporto.com

 Spediporto

 Spediporto

 @spediporto

 @spediportochannel3030





UNIONE UTENTI DEL PORTO DI SAVONA E VADO



Gerardo Chiliotto
President

Unione Utenti del porto di Savona Vado is the association gathering production and shipping companies that are customers of the ports of Savona and Vado Ligure.

Unione Utenti takes care of promptly informing the associated members of any measures and updates regarding the administrative and operational management of the port and contributes to make the quality of the port services offered meet the needs of port customers.

Unione Utenti del Porto di Savona Vado

Via Gramsci 10
17100 Savona - Italy

+39 019 826801

segreteria@utentiporto.sv.it

www.utentiporto.sv.it



ISoMAR is the Association of Savona's Shipping Agents and Forwarders, representing firms operating in the Port of Savona Vado and encouraging the establishment of a positive climate among all the port and shipping community.

ISoMAR supports continuing professional education and training courses and promotes the diffusion of the key skills and expertise among new generations.

ISoMAR is member of National Associations: FEDERAGENTI (Federazione Nazionale degli Agenti Raccomandatori Marittimi e Mediatori Marittimi) and FEDESPEDI (Federazione Nazionale delle Imprese di Spedizione Internazionali).



Fabrizio Pisu
President

**Associazione Agenti Marittimi e
Spedizionieri di Savona e Imperia**

Via degli Orefici 3
17100 Savona (Italia)

+39 019 8484518
segreteria@isomar.it
www.isomar.it





INTERMODAL MARINE TERMINAL (IMT) - MESSINA GROUP

**Riccardo Cantelli**Head of Region
Europe**Massimiliano
Riccardi**Head of Pan-European
Intermodal Logistics &
Special Projects**Roberto Bova**Head of Lines & Trade
Management**Danilo Bova**Pan-European Intermodal
Logistics & Special Projects -
Commercial Development
Manager

Ignazio Messina & C. S.p.A. strengthens its position in multimodal logistics by combining a century of maritime expertise with a modern, integrated approach. At the heart of this strategy is IML, the Group's logistics division, manages inland and intermodal transport across Italy and Europe. Core operations are centered at the IMT terminal in the Port of Genoa - spanning 250,000 sqm, with five berths and direct access to the national rail network - supporting efficient inbound and outbound cargo flows.

This is complemented by inland terminals in Milan Segrate, Vicenza, and Dinazzano, connected daily by rail to Genoa, Ravenna, Massa, and Piedmont. Each site features bonded areas, M&R workshops, and complete handling and storage capabilities. The Group's strategic focus is to transfer increasing freight volumes from road to rail, in line with EU sustainability goals, to reduce emissions and improve efficiency.

Ignazio Messina & C.

Via G. d'Annunzio 91
16121 Genova - Italy

+39 01053961

massimiliano.riccardi@messinaline.itwww.messinaline.it

INTERMODAL MARINE TERMINAL (IMT) - MESSINA GROUP



BRAND OF

1921

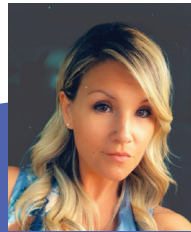


Ignazio Messina & C.

IMT is also expanding its intermodal footprint across France, Germany, and Spain, while developing new corridors in Portugal to broaden its pan-European network.

On the maritime side, Messinaline operates regular liner services to over 50 ports across 40+ countries, offering customized transport solutions between Europe, Africa, the Gulf, India, and Pakistan. With deep - rooted experience in Ro-Ro and multipurpose operations, the company supports complex project and special cargo via a renewed containership fleet and robust heavy-duty flat rack equipment.

IMT and TSC function as independent, multipurpose terminals, able to handle all cargo types except liquid and dry bulk.



Simona Petracchi

Trade & Commercial
Support - Lines & Trade
Management



Gabriele Banchino

Commercial - IMT
Terminal



Emanuele Faranda

General Manager -
Terminal San Giorgio



Andrea Poddighe

Commercial Manager -
Terminal San Giorgio



Doriano Mistrangelo

Technical Director - IMT
Terminal



Pierluigi Tammaro

Operations Manager -
IMT Terminal



Dolores Cigalat

Branch Manager
Ignazio Messina & C -
Valencia Representative
Office



Federico Spinnato

Spain, France, Portugal
Manager
Ignazio Messina
& C - Barcelona
Representative Office



Daniela Mossa
Commercial Manager –
Vado Gateway S.p.A.



Luca Folchitto
Senior Sales Executive –
Vado Gateway S.p.A.

Vado Gateway

Via Aurelia 75B, 17047 Vado Ligure
(SV) Italy

Tel. +39 019 28911

vado_marketing@apmterminals.com

www.vadogateway.com

 Vado Gateway



Vado Gateway (partnership among APM Terminals and COSCO) provides one of the most competitive port terminal services on offer in Europe, combining innovation, automation, intermodal connectivity, and the ability to offer integrated services. It operates two well integrated terminals:

Container Terminal is the first semi-automated port in Italy, featuring a fully automated gate and stacking yard with an overall yearly capacity is of 900.000 TEUs. The 700m deep-sea berth, equipped with four ShipToShore cranes, with a maximum 65-ton capacity in twin lift configuration and 100 tons 'under hook', can handle the latest Ultra Large Container Vessels.

Efficiency and short truck-turn-times are achieved using a truck appointment system - fully integrated with Terminal Operating System.

Reefer Terminal is the leading fruit terminal in the Mediterranean Sea. The multipurpose terminal, operating on a total area of 200.000 sqm has an annual capacity of 250,000 TEUs and 600,000 pallets.

The 24,000 sqm warehouse, only 50m from the quay, is equipped with 14 independent cells with controlled temperatures from -2° to +14°. The terminal operates 3 berths: the main quay, the fruit quay and a RoRo berth.

An off-dock rail facility for both terminals provides rapid access to central and northern Europe as well as regions in Northern Italy, thanks to an upgrading of the rail park, the capacity will be of 12 trains/day.

Among the three PSA Italy terminals, including PSA SECH in the Port of Genoa and PSA Venice-Vecon in the Port of Venice (Marghera), PSA Genova Pra' ranks as the first gateway container terminal in Italy.

The PSA Genova Pra' terminal covers a total surface area of 116 hectares of which 98 dedicated to operations and features a quay length of 1675 metres, with a draught capable of accommodating up to the 24,000 TEUs new generation vessels.

PSA Genova Pra' offers direct on-terminal rail links, and since 2018 the company directly operates rail services to Switzerland, connecting the terminal with Basel 3/week.

Starting Monday, September 15th, 2025, PSA will operate the new STUTTGART EXPRESS: a reliable and efficient connection between the Port of Genoa and Stuttgart/Kornwestheim.

Three times a week, the train will serve the container terminal in Kornwestheim and return to the port terminal in Genova Pra'. PSA will also offer First/Last Mile transport services to/from the Kornwestheim terminal by truck.

Additionally, for both export and import, PSA ensures smooth customs clearance of customers' documents at the Port of Genoa.

SAVE THE DATE

On Tuesday, June 3rd, starting at 12:00, PSA Italy will present the STUTTGART EXPRESS at the PSA stand, Hall B2, Booth 111/212, during Transport Logistic 2025.

PSA SECH

Terminal Contenitori Porto di Genova
Calata Sanità
16126 Genova - Italy

+39 010 64831

psagp-marketing@globalpsa.com

www.psaitaly.com

www.psasech.it



PSA GENOVA PRA'

Pra' Port Basin
16157 Genova - Italy

+39 010 69961

psagp-marketing@globalpsa.com

www.psaitaly.com

www.psagp.it





LANZA INTERNATIONAL



Luca Ciman
General Manager



Luca Di Credico
Sales



Tommaso Leveratto
Sales

Lanza International

Via De Marini 1 - WTC 7th floor
IT-16149 Genova - Italy

+39 010 6444745

+39 335 6961221

l.ciman@lanzainternational.com

www.lanzainternational.com



Founded in Genoa in 1934, today, thanks to our passion and years of experience, we gained leading position in Customs Clearance, Warehousing, Freight Forwarding, Landing of fertilizer, steel products & industrial plants

Lanza's special mission is to meet our clients' needs with innovative solutions, which enable us to achieve new goals to continuing to be leaders in the logistics international system

Lanza has developed expertise of industry freight forwarding services and logistics, which are offered to clients as an integral part of our service, enabling them to select the business solution best suited to their requirements

We can offer multiple options for your freight by SEA & AIR

Lanza provides integrated, single-source logistics solutions to cover the whole Project Cargo supply chain from manufacturing through delivery to the final customer

Our team has more than 20 years of vast expertise in heavy transportation and oversized

THE SOUTHERN GATEWAY TO EUROPE.





Western Ligurian Sea Port Authority

www.portsofgenoa.com - marketing@portsofgenoa.com

Head Office

Palazzo San Giorgio - Via della Mercanzia 2, 16124 Genova- Tel. +39 010 24 11

Port of Savona Office

Via Dei Calafati 16, 17100 Savona - Tel. +39 019 85541

